

**VIRUSES
MAYES
ECOLOGY**

Populations + Population Growth

Exponential Growth



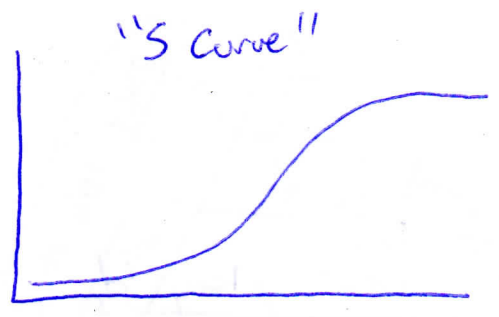
"J curve" Not Practical!

Requires unlimited space
unlimited resources

observed in Bacteria, Viruses, Yeast

Logistic Growth

Begins exponentially but
Slows as limiting factors
are reached



"S Curve"

$K =$ Carrying Capacity
 ↳ Maximum size of population
 ↳ Depends on

Space, resources,
 Competition, disease
 predators

Succession



Stage I
Weeds + Grasses

Stage II
Shrubs + Bushes

Stage III
Pine Forest

Stage IV
Hardwood Forest

Each stage changes +